

# Coronavirus disease (COVID-19)

## Situation Report – 140

Data as received by WHO from national authorities by 10:00 CEST, 08 June 2020

### Highlights

---

A new technical note, [Medical certification, ICD mortality coding, and reporting mortality associated with COVID-19](#), has been released that describes medical certification and classification of deaths related to COVID-19. The primary goal is to identify all deaths due to this disease in all countries.

---

[WHO welcomes crucial new funding for vaccines](#) which was pledged at the [Global Vaccine Summit](#). The new pledges will enable Gavi, the Vaccine Alliance, to protect the next generation and reduce disease inequality by reaching an additional 300 million children with vaccines by 2025. The Summit also highlighted how important a safe, effective and equitably accessible vaccine will be in controlling COVID-19.

---

In today's '[Subject in Focus](#)' below, we provide an update on partner coordination activities. This includes the work of the Global Health Cluster, the Global Outbreak Alert and Response Network, risk communications and community engagement, and the Emergency Medical Teams network.

---

### Situation in numbers (by WHO Region)

Total (new cases in last 24 hours)

<b>Globally</b>	6 931 000 cases (131 296)	400 857 deaths (3 469)
<b>Africa</b>	135 412 cases (4 088)	3 236 deaths (88)
<b>Americas</b>	3 311 387 cases (76 512)	181 804 deaths (2 410)
<b>Eastern Mediterranean</b>	641 429 cases (17 745)	14 602 deaths (276)
<b>Europe</b>	2 286 560 cases (18 258)	184 120 deaths (388)
<b>South-East Asia</b>	364 196 cases (13 654)	9 970 deaths (298)
<b>Western Pacific</b>	191 275 cases (1 039)	7 112 deaths (9)

---

## Subject in Focus: Partner coordination update

Health Cluster partners continue to support implementation of the Global Humanitarian Response Plan for COVID-19 in 29 countries experiencing humanitarian crises, affecting 63 million people. Activities include increasing community awareness of COVID-19 signs and symptoms, related risk factors, the importance of seeking early treatment, and protection measures including isolation and quarantine; supporting community-based surveillance and points of entry screening; and establishing treatment centres and training health workers in COVID-19 case management protocols. To maintain other essential health services (including childhood immunization, maternal and newborn care, and supporting survivors of gender-based violence) partners are adapting existing service delivery models and collaborating with other health-promoting sectors to ensure safe access and mitigate the socio-economic impact of COVID-19. More information can be found on the [Global Health Cluster website](#).

WHO continues to facilitate direct and remote technical assistance to countries through GOARN regional and global networks. All Global Outbreak Alert and Response Network (GOARN) partners are involved in national responses to the pandemic. Partners have made 568 individual offers of international support, and to date, there have been 79 international deployments. Eighteen experts are currently deployed in the field or providing support remotely to countries and WHO. Twelve deployments are currently in process, including for assessment and response teams.

GOARN partners are providing support in epidemiology, surveillance, laboratory, infection prevention and control (IPC), case management, risk communications and community engagement, and in operational coordination. However, restrictions in international travel, and health and safety requirements, remain major constraints on international deployments to all countries.

UNICEF, the International Federation of Red Cross and Red Crescent Societies (IFRC), the United States Centers for Disease Control and Prevention, and the United Nations Office for the Coordination of Humanitarian Affairs (OCHA) continue to work closely with WHO, embedded in the global COVID-19 incident management team and supporting all pillars of the response. Weekly coordination with GOARN partners ensures updates on developments of the pandemic, and on current operations and priorities by WHO and partners. The GOARN [COVID-19 Knowledge Hub](#) facilitates sharing of resources by partners and other stakeholders.

IFRC, UNICEF, and WHO, with GOARN support, are strengthening coordination and collaboration among key stakeholders at the global and regional levels in risk communications and community engagement (RCCE). This includes:

- Ongoing weekly collaboration with partners and regional focal points to ensure alignment on response priorities and actions; with deep-dive sessions on topics of special interest to partners being held bi-weekly;
- A current focus on adapting global RCCE strategy to current outbreak scenarios and defining workplans for the months ahead;
- Thematic workgroups on priority topics, including migrants and refugees, operational social sciences, and RCCE in low resource settings. An additional focus is on establishing monitoring and evaluation indicators and a dashboard for easy access to data amongst partners.

WHO, Esri, the Pacific Disaster Center (PDC), the George Alleyne Chronic Disease Research Centre (GA-CDRC), the European Centre for Disease Prevention and Control (ECDC), and GIS

Corps are working together to increase GIS technical capacity of GOARN partners for the COVID-19 pandemic and other future outbreaks.

GOARN partners are collaborating on the development of a new online contact tracing training “Social determinants of health in culture in contact tracing”, jointly led by the Australian and Canadian Field Epidemiology Training Programmes. Partners are also developing short virtual GOARN Outbreak Response Leadership training on “sense-making” and “decision-making” for COVID-19 responders.

From 9 through 11 June, WHO will convene an online consultation to share practical technical and operational experience on contact tracing activities for COVID-19, including innovations in digital technology, training, and use of Go.Data and other tools. The aim is to identify practical opportunities for stakeholders and partners to build capacity through both traditional and innovative contact tracing approaches. WHO and partners are continuing to support the rollout and use of Go.Data to assist the urgent scale up of contact tracing capacity.

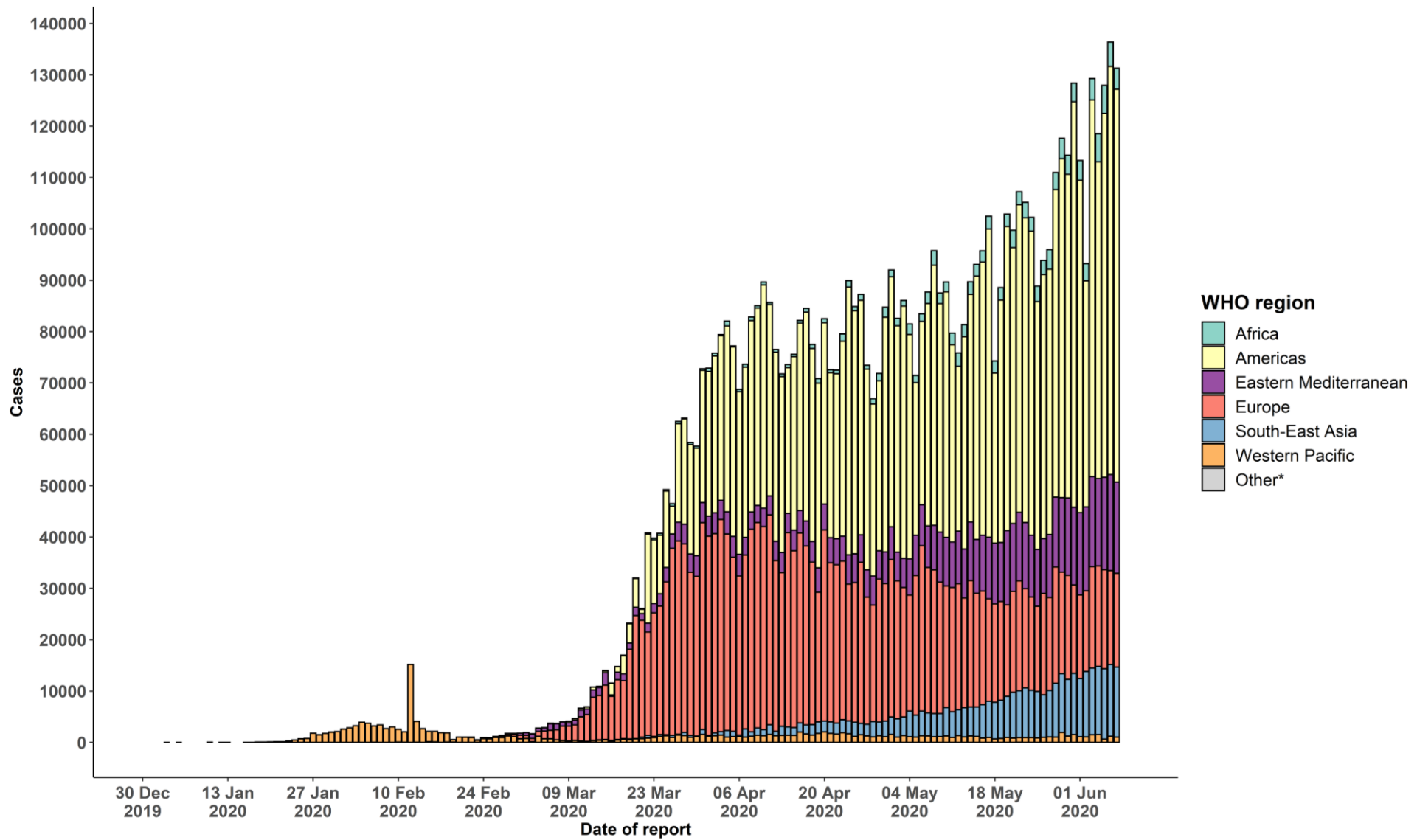
As of 7 June 2020, the Emergency Medical Teams (EMT) network has deployed 23 international EMTs to the most affected areas mainly in Europe and Africa. A further 43 national teams, in the process of international classification, have been mobilized to support national health system surge capacity. Over 500 national teams have used the EMT methodology to respond to the COVID-19 crisis.

On 29 May 2020, the EMT Strategic Advisory Group was convened, where the EMT Secretariat reported the management of more than 10 000 beds, and 400 trainings with over 11 000 front line responders trained across all six WHO Regions.

EMT senior experts have been deployed to oversee the management of operations in Accra, Ghana and Cox’s Bazar, Bangladesh as surge to support the respective WHO Country Offices, Ministries of Health and partners to improve the coordination and provision of appropriate care to COVID-19 patients.

# Surveillance

Figure 1. Number of confirmed COVID-19 cases, by date of report and WHO region, 30 December through 08 June\*\*



\*\*See [Annex 1](#) for data, table and figure notes.

Table 1. Countries, territories or areas with reported laboratory-confirmed COVID-19 cases and deaths, by WHO region. Data as of 10 AM CEST, 08 June 2020\*\*

Reporting Country/ Territory/Area	Total confirmed cases	Total confirmed new cases	Total deaths	Total new deaths	Transmission classification <sup>1</sup>	Days since last reported case
Africa						
South Africa	48 285	2 312	998	46	Community transmission	0
Nigeria	12 486	253	354	12	Community transmission	0
Algeria	10 154	104	707	9	Community transmission	0
Ghana	9 638	176	44	0	Community transmission	0
Cameroon	7 860	261	215	3	Community transmission	0
Senegal	4 328	79	49	2	Community transmission	0
Guinea	4 165	48	23	0	Community transmission	0
Democratic Republic of the Congo	4 015	138	84	3	Community transmission	0
Côte d'Ivoire	3 739	182	36	0	Community transmission	0
Gabon	3 101	0	21	0	Community transmission	2
Kenya	2 767	167	84	1	Community transmission	0
Ethiopia	2 020	86	27	7	Clusters of cases	0
Central African Republic	1 634	64	5	0	Clusters of cases	0
Mali	1 533	10	92	2	Community transmission	0
Guinea-Bissau	1 368	0	12	0	Community transmission	2
South Sudan	1 317	0	14	0	Clusters of cases	4
Zambia	1 154	0	7	0	Community transmission	1
Madagascar	1 052	26	9	1	Clusters of cases	0
Equatorial Guinea	1 043	0	12	0	Community transmission	15
Niger	973	3	65	0	Community transmission	0
Sierra Leone	969	23	48	0	Community transmission	0

Reporting Country/ Territory/Area	Total confirmed cases	Total confirmed new cases	Total deaths	Total new deaths	Transmission classification <sup>1</sup>	Days since last reported case
Mauritania	947	0	43	0	Clusters of cases	1
Burkina Faso	888	0	53	0	Community transmission	1
Chad	837	1	69	0	Community transmission	0
Uganda	745	23	0	0	Sporadic cases	0
Congo	683	30	22	2	Community transmission	0
Cabo Verde	554	12	5	0	Clusters of cases	0
United Republic of Tanzania	509	0	21	0	Community transmission	31
Togo	495	8	13	0	Community transmission	0
Rwanda	439	8	2	0	Sporadic cases	0
Malawi	438	29	4	0	Clusters of cases	0
Mozambique	424	15	2	0	Clusters of cases	0
Liberia	359	14	30	0	Community transmission	0
Mauritius	337	0	10	0	Clusters of cases	2
Eswatini	333	11	3	0	Clusters of cases	0
São Tomé and Príncipe	295	0	10	0	Clusters of cases	12
Zimbabwe	279	0	4	0	Sporadic cases	1
Benin	268	0	4	0	Community transmission	1
Comoros	97	0	2	0	Community transmission	1
Angola	91	5	4	0	Clusters of cases	0
Burundi	83	0	1	0	Clusters of cases	1
Eritrea	41	0	0	0	Sporadic cases	3
Botswana	40	0	1	0	Clusters of cases	5
Namibia	29	0	0	0	Sporadic cases	1

Reporting Country/ Territory/Area	Total confirmed cases	Total confirmed new cases	Total deaths	Total new deaths	Transmission classification <sup>i</sup>	Days since last reported case
Gambia	26	0	1	0	Sporadic cases	5
Seychelles	11	0	0	0	Clusters of cases	62
Lesotho	4	0	0	0	Sporadic cases	4
<b>Territories<sup>ii</sup></b>						
Mayotte	2 079	0	25	0	Clusters of cases	2
Réunion	480	0	1	0	Clusters of cases	2
<b>Americas</b>						
United States of America	1 915 712	28 918	109 746	708	Community transmission	0
Brazil	672 846	27 075	35 930	904	Community transmission	0
Peru	191 758	4 358	5 301	139	Community transmission	0
Chile	134 150	6405	1 637	96	Community transmission	0
Mexico	113 619	3 593	13 511	341	Community transmission	0
Canada	95 057	722	7 773	70	Community transmission	0
Ecuador	43 120	392	3 621	13	Community transmission	0
Colombia	38 027	1 392	1 205	60	Community transmission	0
Argentina	22 020	983	656	14	Community transmission	0
Dominican Republic	19 600	405	538	2	Community transmission	0
Panama	16 004	541	386	16	Community transmission	0
Bolivia (Plurinational State of)	13 358	630	454	27	Community transmission	0
Guatemala	6 792	307	230	14	Community transmission	0
Honduras	6 155	184	250	2	Community transmission	0
Haiti	3 072	148	50	0	Community transmission	0
El Salvador	3 015	81	55	2	Community transmission	0
Venezuela (Bolivarian Republic of)	2 316	171	22	2	Community transmission	0

Reporting Country/ Territory/Area	Total confirmed cases	Total confirmed new cases	Total deaths	Total new deaths	Transmission classification <sup>i</sup>	Days since last reported case
Cuba	2 191	18	83	0	Clusters of cases	0
Nicaragua	1 309	0	46	0	Community transmission	4
Costa Rica	1 263	0	10	0	Clusters of cases	1
Paraguay	1 135	45	11	0	Community transmission	0
Uruguay	845	11	23	0	Clusters of cases	0
Jamaica	596	1	10	0	Clusters of cases	0
Guyana	154	1	12	0	Clusters of cases	0
Trinidad and Tobago	117	0	8	0	Sporadic cases	7
Bahamas	103	0	11	0	Clusters of cases	1
Suriname	101	11	1	0	Sporadic cases	0
Barbados	92	0	7	0	Clusters of cases	14
Saint Vincent and the Grenadines	26	0	0	0	Sporadic cases	7
Antigua and Barbuda	25	0	3	0	Clusters of cases	35
Grenada	23	0	0	0	Clusters of cases	12
Belize	19	0	2	0	Sporadic cases	1
Saint Lucia	19	0	0	0	Sporadic cases	2
Dominica	16	0	0	0	Clusters of cases	58
Saint Kitts and Nevis	15	0	0	0	Sporadic cases	48
<b>Territories<sup>ii</sup></b>						
Puerto Rico	4 985	70	142	0	Community transmission	0
French Guiana	689	50	1	0	Clusters of cases	0
Martinique	202	0	14	0	Clusters of cases	1
Cayman Islands	164	0	1	0	Clusters of cases	1
Guadeloupe	164	0	14	0	Clusters of cases	2



Reporting Country/ Territory/Area	Total confirmed cases	Total confirmed new cases	Total deaths	Total new deaths	Transmission classification <sup>1</sup>	Days since last reported case
Bermuda	141	0	9	0	Clusters of cases	5
Aruba	101	0	3	0	No cases	33
Sint Maarten	77	0	15	0	Sporadic cases	2
United States Virgin Islands	71	0	6	0	Clusters of cases	3
Saint Martin	41	0	3	0	Sporadic cases	8
Curaçao	21	0	1	0	Sporadic cases	3
Falkland Islands (Malvinas)	13	0	0	0	Clusters of cases	43
Turks and Caicos Islands	12	0	1	0	Sporadic cases	41
Montserrat	11	0	1	0	Sporadic cases	55
British Virgin Islands	8	0	1	0	Sporadic cases	23
Bonaire, Sint Eustatius and Saba	7	0	0	0	No cases	13
Saint Barthélemy	6	0	0	0	Sporadic cases	69
Anguilla	3	0	0	0	Sporadic cases	65
Saint Pierre and Miquelon	1	0	0	0	Sporadic cases	61
<b>Eastern Mediterranean</b>						
Iran (Islamic Republic of)	171 789	2 364	8 281	72	Community transmission	0
Pakistan	103 671	4 728	2 067	65	Clusters of cases	0
Saudi Arabia	101 914	3 045	712	36	Clusters of cases	0
Qatar	68 790	1 595	54	3	Community transmission	0
United Arab Emirates	38 808	540	276	1	Pending	0
Egypt	34 079	1 467	1 237	39	Clusters of cases	0
Kuwait	31 848	717	264	10	Clusters of cases	0
Afghanistan	20 917	575	369	12	Clusters of cases	0
Oman	16 882	866	75	3	Clusters of cases	0

Reporting Country/ Territory/Area	Total confirmed cases	Total confirmed new cases	Total deaths	Total new deaths	Transmission classification <sup>1</sup>	Days since last reported case
Bahrain	14 763	380	26	2	Clusters of cases	0
Iraq	12 366	1 268	346	28	Clusters of cases	0
Morocco	8 224	73	208	0	Clusters of cases	0
Sudan	6 083	2	359	0	Community transmission	0
Djibouti	4 207	38	28	2	Clusters of cases	0
Somalia	2 334	45	83	1	Sporadic cases	0
Lebanon	1 331	11	30	1	Clusters of cases	0
Tunisia	1 087	0	49	0	Community transmission	4
Jordan	808	13	9	0	Clusters of cases	0
Yemen	488	2	113	1	Pending	0
Libya	256	0	5	0	Clusters of cases	1
Syrian Arab Republic	141	16	6	0	Community transmission	0
<b>Territories<sup>ii</sup></b>						
occupied Palestinian territory	643	0	5	0	Clusters of cases	3
<b>Europe</b>						
Russian Federation	476 658	8 985	5 971	112	Clusters of cases	0
The United Kingdom	286 198	1 326	40 542	77	Community transmission	0
Spain	241 550	240	27 136	1	Community transmission	0
Italy	234 998	197	33 899	53	Community transmission	0
Germany	184 193	214	8 674	6	Community transmission	0
Turkey	170 132	914	4 692	23	Community transmission	0
France	150 315	293	29 097	13	Community transmission	0
Belgium	59 226	154	9 595	15	Community transmission	0
Belarus	48 630	1762	269	10	Community transmission	0

Reporting Country/ Territory/Area	Total confirmed cases	Total confirmed new cases	Total deaths	Total new deaths	Transmission classification <sup>1</sup>	Days since last reported case
Netherlands	47 574	239	6 013	2	Community transmission	0
Sweden	44 730	843	4 659	3	Community transmission	0
Portugal	34 493	142	1 479	5	Community transmission	0
Switzerland	30 882	9	1 660	0	Community transmission	0
Ukraine	27 462	463	797	9	Community transmission	0
Poland	26 561	575	1 157	4	Community transmission	0
Ireland	25 201	18	1 679	9	Community transmission	0
Romania	20 479	189	1 326	8	Community transmission	0
Israel	17 783	77	294	2	Pending	0
Austria	16 868	46	672	0	Community transmission	0
Armenia	13 325	195	211	11	Community transmission	0
Kazakhstan	12 859	165	56	2	Clusters of cases	0
Denmark	11 948	24	589	2	Community transmission	0
Serbia	11 823	82	249	1	Pending	0
Republic of Moldova	9 700	189	346	11	Community transmission	0
Czechia	9 628	61	327	0	Clusters of cases	0
Norway	8 504	0	238	0	Clusters of cases	2
Azerbaijan	7 553	314	88	4	Clusters of cases	0
Finland	6 981	17	323	1	Pending	0
Tajikistan	4 529	76	48	0	Pending	0
Uzbekistan	4 352	171	17	0	Clusters of cases	0
Luxembourg	4 039	4	110	0	Clusters of cases	0
Hungary	3 970	0	542	0	Community transmission	2
North Macedonia	3 028	113	153	2	Clusters of cases	0

Reporting Country/ Territory/Area	Total confirmed cases	Total confirmed new cases	Total deaths	Total new deaths	Transmission classification <sup>i</sup>	Days since last reported case
Greece	2 952	0	180	0	Clusters of cases	1
Bulgaria	2 727	16	160	0	Clusters of cases	0
Bosnia and Herzegovina	2 673	28	159	1	Community transmission	0
Croatia	2 247	0	104	0	Sporadic cases	3
Kyrgyzstan	2 032	25	23	1	Clusters of cases	0
Estonia	1 939	8	69	0	Clusters of cases	0
Iceland	1 807	1	10	0	Community transmission	0
Lithuania	1 714	9	71	0	Community transmission	0
Slovakia	1 528	0	28	0	Clusters of cases	1
Slovenia	1 485	0	108	0	Clusters of cases	1
Albania	1 263	17	34	0	Clusters of cases	0
Latvia	1 088	2	25	0	Clusters of cases	0
Cyprus	964	4	18	0	Clusters of cases	0
Andorra	852	0	51	0	Community transmission	3
Georgia	810	1	13	0	Community transmission	0
San Marino	695	0	42	0	Community transmission	3
Malta	629	7	9	0	Sporadic cases	0
Montenegro	324	0	9	0	Clusters of cases	33
Monaco	99	0	1	0	Sporadic cases	1
Liechtenstein	83	0	1	0	Pending	43
Holy See	12	0	0	0	Sporadic cases	32
<b>Territories<sup>ii</sup></b>						
Kosovo <sup>[1]</sup>	1 191	40	30	0	Community transmission	0
Isle of Man	336	0	24	0	Pending	17

Reporting Country/ Territory/Area	Total confirmed cases	Total confirmed new cases	Total deaths	Total new deaths	Transmission classification <sup>1</sup>	Days since last reported case
Jersey	311	2	30	0	Community transmission	0
Guernsey	252	0	13	0	Community transmission	36
Faroe Islands	187	0	0	0	Pending	45
Gibraltar	175	1	0	0	Clusters of cases	0
Greenland	13	0	0	0	Pending	10
<b>South-East Asia</b>						
India	256 611	9 983	7 135	206	Clusters of cases	0
Bangladesh	65 769	2 743	888	42	Community transmission	0
Indonesia	31 186	672	1 851	50	Community transmission	0
Nepal	3 448	213	13	0	Sporadic cases	0
Thailand	3 119	7	58	0	Clusters of cases	0
Maldives	1 903	2	8	0	Clusters of cases	0
Sri Lanka	1 835	21	11	0	Clusters of cases	0
Myanmar	242	2	6	0	Clusters of cases	0
Bhutan	59	11	0	0	Sporadic cases	0
Timor-Leste	24	0	0	0	Clusters of cases	45
<b>Western Pacific</b>						
China	84 634	5	4 645	0	Clusters of cases	0
Singapore	37 910	383	25	0	Clusters of cases	0
Philippines	21 895	555	1 003	9	Community transmission	0
Japan	17 174	33	916	0	Clusters of cases	0
Republic of Korea	11 814	38	273	0	Clusters of cases	0
Malaysia	8 322	19	117	0	Clusters of cases	0

Reporting Country/ Territory/Area	Total confirmed cases	Total confirmed new cases	Total deaths	Total new deaths	Transmission classification <sup>i</sup>	Days since last reported case
Australia	7 260	5	102	0	Clusters of cases	0
New Zealand	1 154	0	22	0	Clusters of cases	17
Viet Nam	329	0	0	0	Clusters of cases	2
Mongolia	193	0	0	0	Sporadic cases	1
Brunei Darussalam	141	0	2	0	Clusters of cases	31
Cambodia	126	0	0	0	Sporadic cases	1
Lao People's Democratic Republic	19	0	0	0	Sporadic cases	56
Fiji	18	0	0	0	Sporadic cases	48
Papua New Guinea	8	0	0	0	Sporadic cases	46
<b>Territories<sup>ii</sup></b>						
Guam	171	0	5	0	Clusters of cases	3
French Polynesia	60	0	0	0	Sporadic cases	33
Northern Mariana Islands (Commonwealth of the)	27	1	2	0	Pending	0
New Caledonia	20	0	0	0	Sporadic cases	3
<b>Subtotal for all regions</b>	<b>6 930 259</b>	<b>131 296</b>	<b>400 844</b>	<b>3 469</b>		
Other*	741	0	13	0	Not applicable	-
<b>Grand total</b>	<b>6 931 000</b>	<b>131 296</b>	<b>400 857</b>	<b>3 469</b>		

\*\*See [Annex 1](#) for data, table and figure notes.

---

## Technical guidance and other resources

- To view all technical guidance documents regarding COVID-19, please go to [this webpage](#).
- Updates from WHO regional offices
  - [WHO AFRO](#)
  - [WHO PAHO](#)
  - [WHO EMRO](#)
  - [WHO SEARO](#)
  - [WHO EURO](#)
  - [WHO WPRO](#)
- [Research and Development](#)
- [Online courses on COVID-19](#) and in [additional national languages](#)
- [The Strategic Preparedness and Response Plan](#) (SPRP) outlining the support the international community can provide to all countries to prepare and respond to the virus
- [WHO Coronavirus Disease \(COVID-19\) Dashboard](#)
- [Weekly COVID-19 Operations Updates](#)

---

## Recommendations and advice for the public

- [Protect yourself](#)
- [Questions and answers](#)
- [Travel advice](#)
- [EPI-WIN](#): tailored information for individuals, organizations and communities

---

## Case definitions

WHO periodically updates the [Global Surveillance for human infection with coronavirus disease \(COVID-19\)](#) document which includes surveillance definitions.

### Definition of COVID-19 death

COVID-19 death is defined for surveillance purposes as a death resulting from a clinically compatible illness in a probable or confirmed COVID-19 case, unless there is a clear alternative cause of death that cannot be related to COVID-19 disease (e.g. trauma). There should be no period of complete recovery between the illness and death.

Further guidance for certification and classification (coding) of COVID-19 as cause of death is available [here and here](#).

---

## Annex 1: Data, table and figure notes

Caution must be taken when interpreting all data presented. Differences are to be expected between information products published by WHO, national public health authorities, and other sources using different inclusion criteria and different data cut-off times. While steps are taken to ensure accuracy and reliability, all data are subject to continuous verification and change. Case detection, definitions, testing strategies, reporting practice, and lag times differ between countries/territories/areas. These factors, amongst others, influence the counts presented, with variable underestimation of true case and death counts, and variable delays to reflecting these data at global level.

The designations employed, and the presentation of these materials do not imply the expression of any opinion whatsoever on the part of WHO concerning the legal status of any country, territory or area or of its authorities, or concerning the delimitation of its frontiers or boundaries. Dotted and dashed lines on maps represent approximate border lines for which there may not yet be full agreement. Countries, territories and areas are arranged under the administering WHO region.

The mention of specific companies or of certain manufacturers' products does not imply that they are endorsed or recommended by WHO in preference to others of a similar nature that are not mentioned. Errors and omissions excepted, the names of proprietary products are distinguished by initial capital letters.

<sup>[1]</sup> All references to Kosovo should be understood to be in the context of the United Nations Security Council resolution 1244 (1999).

Counts reflect laboratory-confirmed cases and deaths, based on [WHO case definitions](#), unless stated otherwise (see Country, territory, or area-specific updates and errata), and include both domestic and repatriated cases.

Other\*: includes cases reported from international conveyances.

Due to the recent trend of countries conducting data reconciliation exercises which remove large numbers of cases or deaths from their total counts, WHO will now display such data as negative numbers in the "new cases" / "new deaths" columns as appropriate. This will aid readers in identifying when such adjustments occur. When additional details become available that allow the subtractions to be suitably apportioned to previous days, graphics will be updated accordingly. Prior situation reports will not be edited; see [covid19.who.int](https://covid19.who.int) for the most up-to-date data.

### Additional table notes

<sup>i</sup> Transmission classification is based on a process of country/territory/area self-reporting. Classifications are reviewed on a weekly basis, and may be revised as new



information becomes available. and. Differing degrees of transmission may be present within countries/territories/areas; classification is based on the highest category reported within a country/territory/area. Categories:

- No cases: with no confirmed cases
- Sporadic cases: with one or more cases, imported or locally detected
- Clusters of cases: experiencing cases, clustered in time, geographic location and/or by common exposures
- Community transmission: experiencing larger outbreaks of local transmission defined through an assessment of factors including, but not limited to: large numbers of cases not linkable to transmission chains; large numbers of cases from sentinel lab surveillance; and/or multiple unrelated clusters in several areas of the country/territory/area
- Pending: transmission classification has not been reported to WHO

ii "Territories" include territories, areas, overseas dependencies and other jurisdictions of similar status.

#### **Country, territory, or area-specific updates and errata**

- None